

PROJECT BY



S. S. Properties Pvt. Ltd.

Creating Landmarks

SITE OFFICE

Near Poornaprajna College & Auditorium, Venkatramana Temple Road, Udupi. Ph : +91 9448346496 0820- 4290710 / 0820- 4290269

HEAD OFFICE

Ground Floor, Pratham Abode, Vidyaratna Nagar, End Point Road, Manipal. Ph.: 0820- 4291210 / 0820- 4291269

Web site: www.ssproperties.in

Email: ssproperties_manipal@yahoo.co.in

DISCLAIMER: This brochure is purely conceptual & not a legal offering. The developer reserves all the rights to add, delete, alter any detail, specifications, elevation mentioned herein. The brochure is indicative of how the furniture can be arranged in the residential unit. No furniture is to be supplied to the purchaser by the developer unless otherwise mentioned. All images, unless otherwise indicated are used for illustrative purpose only.

All Rights Reserved: No part of this brochure will be reproduced, stored or transmitted in any form or by any means, electronic or mechanical, including photocopy or recording on any other information storage or retrieval system, without the written permission of Square One Media Solution Pvt.Ltd. Brochure Concept,Design & 3D Imagery: Square One Media Solution Pvt.Ltd. 163, MG Road, Pune

square1d.com



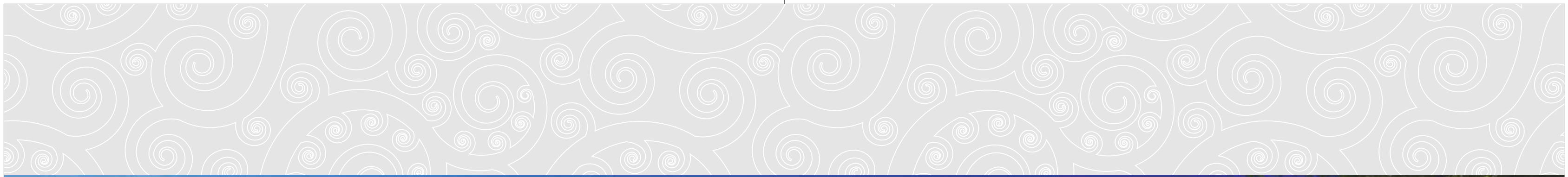
COMMERCIAL & OFFICES SPACES

@ THE HEART OF CITY, UDUPI



gain an easy access
TO GREAT OPPORTUNITIES..

become a part of
VRINDAVAN COMMERCIAL.



COMMERCIAL CENTER WITHIN FINELY DEVELOPED RESIDENCES...

Being among the abodes spread over 2.8 acres land at mere 5 mins walking distance from the world famous Sri Krishna temple, is blessing in itself. Getting an opportunity to become a part of such a location that is sure to flourish is simply priceless.

A FINE BLEND
OF AESTHETICS
& FUNTIONALITY

Designed with an intuitive brilliance,
these commercial places exude an
obvious aura of a harmonic beauty
and a prolific artistry of precision.







WORK SPACES @ VRINDAVAN COMMERCIAL

SALIENT FEATURES

- State-of-the-art iconic forms with a distinct skyline visible from surrounding boulevards
- Unique architectural character with the combination of glass curtain walls, stone cladding, and metal finishes
- Large and efficient open space plans with centrally located core

These work places boast of professionalism as well as ultimate convenience with sublime sense of aesthetics and grand parking facility.



RETAIL SPACES @ VRINDAVAN COMMERCIAL

These are the shopfloors that are crafted to flaunt the best of the products and create a long lasting impression in the minds of the cutomers.



BASEMENT PARKING



SECURITY SURVEILLANCE



SUPERIOR SPECIFICATIONS

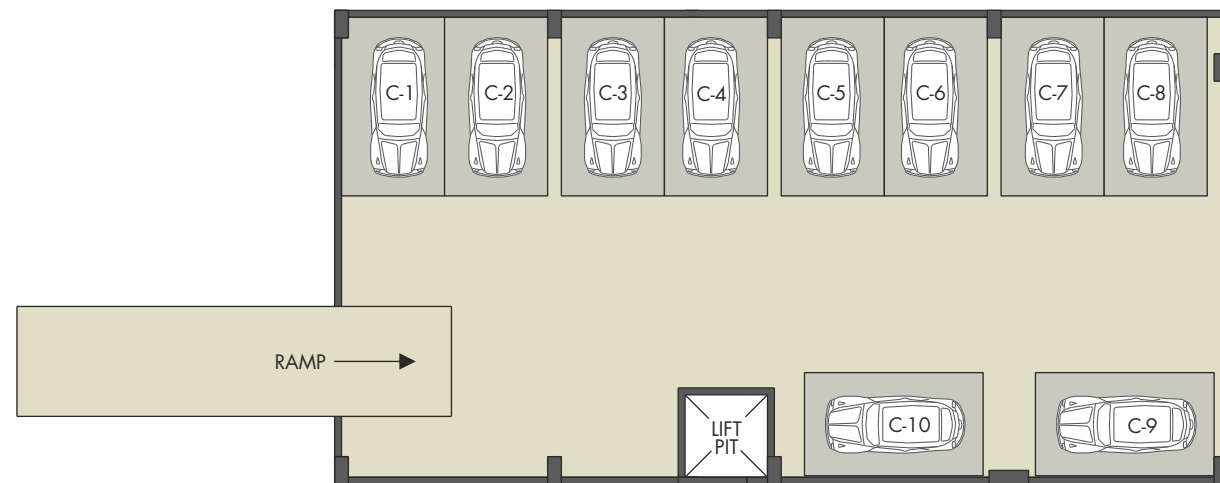


ATTRACTIVE ELEVATION

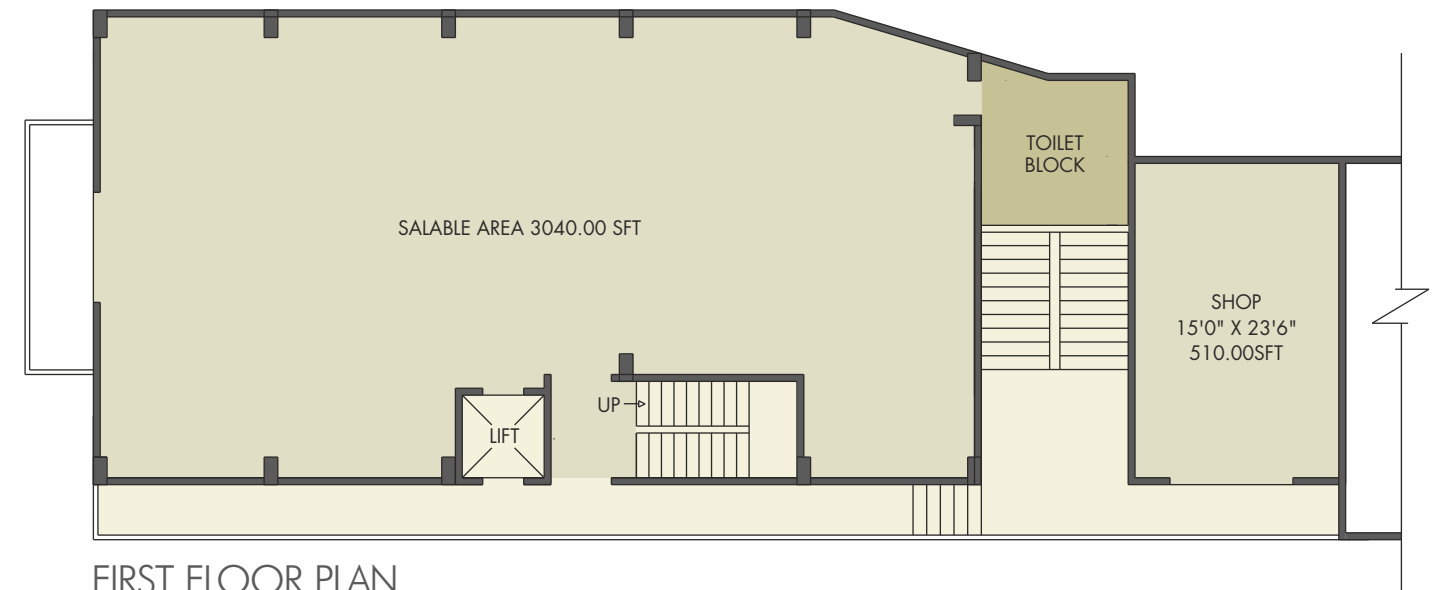


AMAZING LOCATION

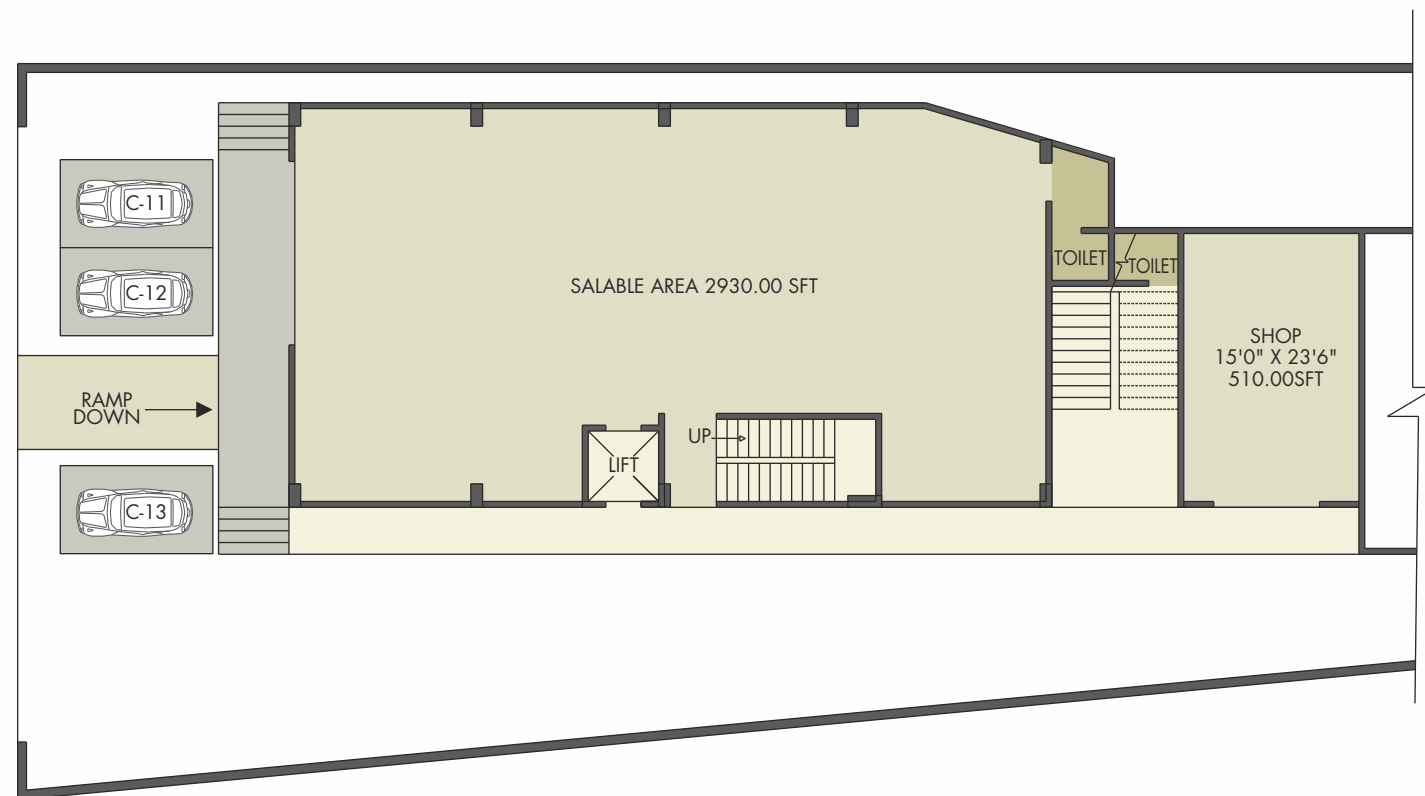




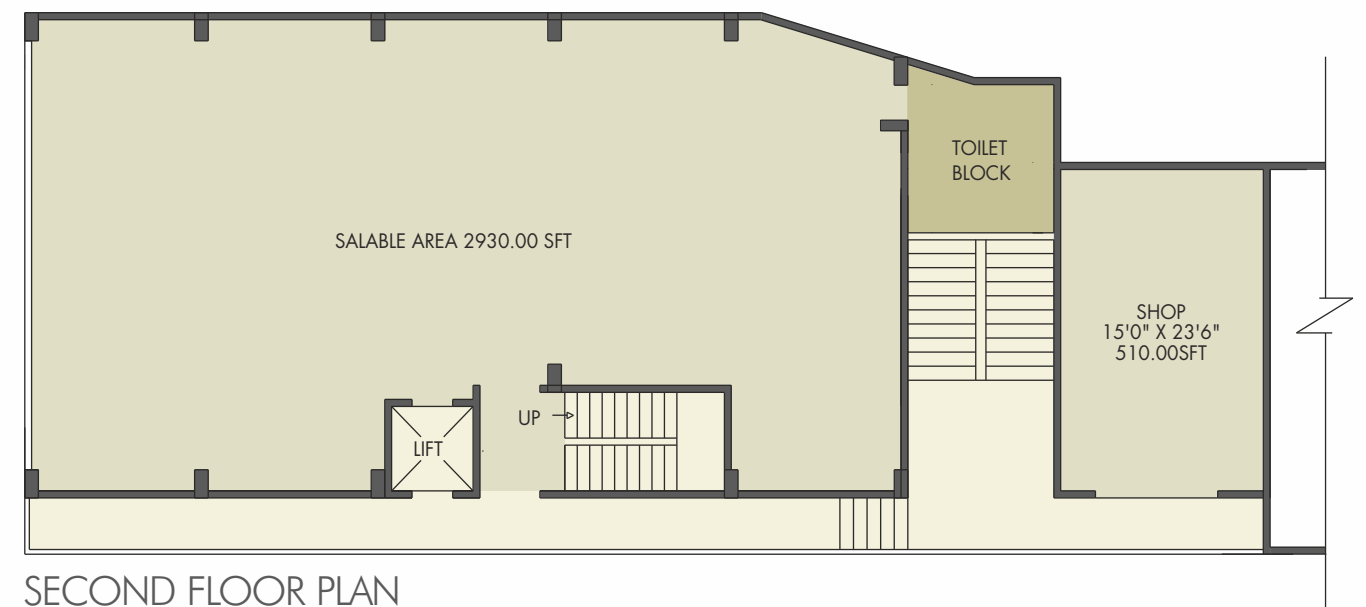
BASEMENT LEVEL PLAN



FIRST FLOOR PLAN



GROUND FLOOR PLAN



SECOND FLOOR PLAN





KRISHNA MATH, UDUPI



SCHOOL



HOTEL



HOSPITAL



KEY CONNECTIVITY..

- Shri Krishna Temple - 400 m
- Srilaxmi Venkateshwara Temple - 75 m
- Poorna Prajna College & Auditorium - 50 m
- South School - 25 m
- Market - 150 m
- Diana Hotel - 300 m
- Court Complex - 400 m
- Mother of Sorrow Church - 350 m
- Hospital - 1km
- Bus Stand - 1.1 km
- Beedinagudde - 550 m
- Udupi Railway Station - 3.5 km
- Manipal - 4 km
- Malpe Beach - 6 km
- Muncipal Corporation - 500 m
- Electricity Board - 400 m

A HEAVENLY LOCATION..

A business amidst the city of temples is sure to flourish with the divine surroundings. Being at the heart of Udupi city and an inherent part of a project that offers an exclusive lifestyle, makes Vrindavan Commercial an opportune moment for visionary businessmen.